

TECHNICAL DATASHEET

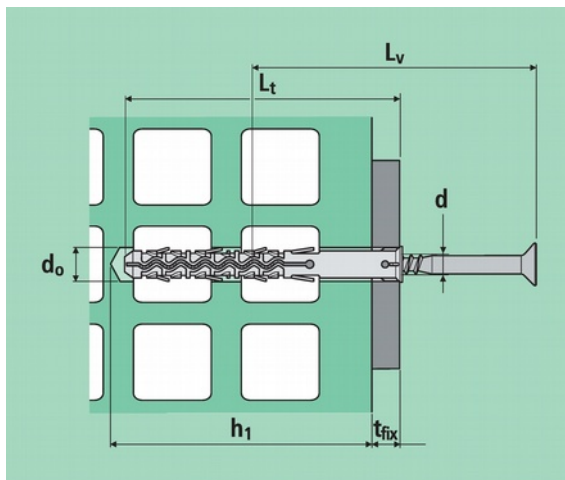
LATER CORNICE NYLON all-purpose plug

EN
rev. 12/2016
p. 1/4

Plug for frame fixings with collar and anti-rotation flaps
For push-through fastening on semi-solid and hollow supports

Base material

specific use	suitable
perforated masonry hollow masonry plasterboard (Later Cornice Ø8 only)	solid masonry concrete hollow blocks



d_0 = plug diameter = hole diameter

L_t = plug length

h_1 = minimum hole depth

h_{nom} = overall embedment depth

h_{ef} = effective anchorage depth

d = screw diameter

L_v = screw length

t_{fix} = fixable thickness

$h_{nom} = h_{ef}$

$t_{fix} = L_t - h_{nom}$

LATER CORNICE Nylon



art.	descr.	d_0 mm	L_t mm	h_1 mm	h_{ef} mm	t_{fix} mm	d_v mm
19005	C10A80LU	10	80	85	75	5	7
19001	C10A100LU		100			25	
19002	C10A120LU		120			45	
19003	C10A140LUV		140			65	
19004	C10A160LU		160			85	
HTLA1216	C12A160LU	12	160	110	100	125	10

LATER CORNICE Nylon Ø8

with countersunk POZIDRIV screw
white zinc plated

available also in A2 stainless steel



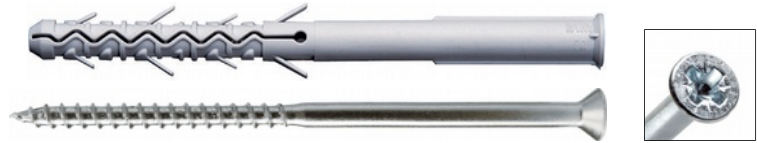
art.	descr.	d_0 mm	L_t mm	h_1 mm	h_{ef} mm	t_{fix} mm	d_v mm	L_v mm	slot
HTLAU07	C8A80LUV	8	80	55	45	35	5	85	PZ3
HTLAU01	C8A100LUV		100			55		105	
HTLAU02	C8A120LUV		120			75		125	
HTLAU03	C8A140LUV		140			95		145	

TECHNICAL DATASHEET

LATER CORNICE NYLON all-purpose plug

EN
rev. 12/2016
p. 2/4

LATER CORNICE Nylon Ø10
with countersunk POZIDRIV screw
white zinc plated
available also in A2 stainless steel



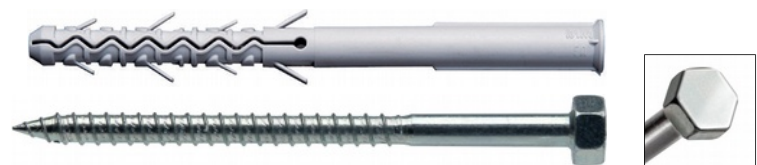
art.	descr.	d ₀ mm	L _t mm	h ₁ mm	h _{ef} mm	t _{fix} mm	d _v mm	L _v mm	slot
HTLAU10	C10A80LUV	10	80	85	75	5	7	85	PZ4
HTLAU08	C10A100LUV		100			25		105	
HTLAU04	C10A120LUV		120			45		125	
HTLAU05	C10A140LUV		140			65		145	
HTLAU06	C10A160LUV		160			85		165	
HTLAU09	C10A200LUV		200			125		205	

LATER CORNICE Nylon Ø10
with countersunk TORX screw
white zinc plated
available also in A2 stainless steel



art.	descr.	d ₀ mm	L _t mm	h ₁ mm	h _{ef} mm	t _{fix} mm	d _v mm	L _v mm	slot
HTLAUT10	C10A80LUVT	10	80	85	75	5	7	85	T40
HTLAUT08	C10A100LUVT		100			25		105	
HTLAUT04	C10A120LUVT		120			45		125	
HTLAUT05	C10A140LUVT		140			65		145	
HTLAUT06	C10A160LUVT		160			85		165	
HTLAUT09	C10A200LUVT		200			125		205	

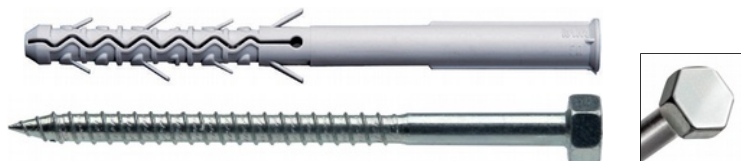
LATER CORNICE Nylon Ø10
with hexagonal head screw
white zinc plated
available also in A2 stainless steel



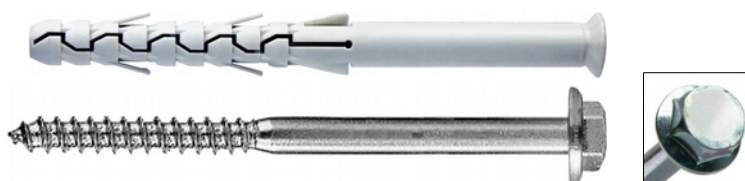
art.	descr.	d ₀ mm	L _t mm	h ₁ mm	h _{ef} mm	t _{fix} mm	d _v mm	L _v mm	span
HTLAUE10	C10A80LUV E	10	80	85	75	5	7	85	13
HTLAUE08	C10A100LUV E		100			25		105	
HTLAUE04	C10A120LUV E		120			45		125	
HTLAUE05	C10A140LUV E		140			65		145	
HTLAUE06	C10A160LUV E		160			85		165	
HTLAUE09	C10A200LUV E		200			125		205	

TECHNICAL DATASHEET
LATER CORNICE NYLON all-purpose plug

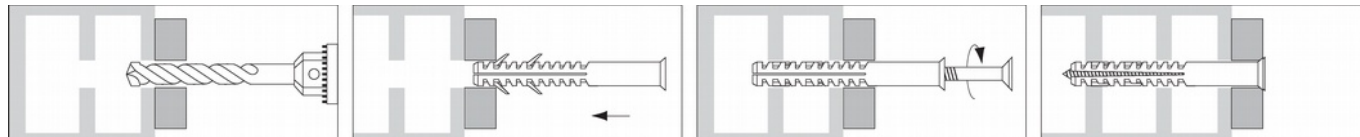
 EN
 rev. 12/2016
 p. 3/4

LATER CORNICE Nylon Ø12
 with hexagonal head screw
 white zinc plated


art.	descr.	d ₀ mm	L _t mm	h ₁ mm	h _{ef} mm	t _{fix} mm	d _v mm	L _v mm	span
HTLAUE11	C12A160LUVE	12	160	110	100	60	10	165	17
HTLAUE12	C12A200LUVE		200			100		205	
HTLAUE13	C12A250LUVE		240			140		245	

LATER CORNICE Nylon Ø16
 with flanged hexagonal head screw
 white zinc plated


art.	descr.	d ₀ mm	L _t mm	h ₁ mm	h _{ef} mm	t _{fix} mm	d _v mm	L _v mm	span
37093	C16A140LUVEFL	16	140	130	120	20	12	145	19
37094	C16A160LUVEFL		160			40		165	
37095	C16A200LUVEFL		200			80		205	
37096	C16A240LUVEFL		240			120		245	

Installation

Materials

part	material	coating
plug	polyamide (Nylon) grey	-
screw	steel (Later Cornice Ø8 and Ø10 also available in A2 stainless steel)	white zinc ≥ 5 µm ISO 4042

Strength data

in daN (1 daN ≈ 1 kg)

Characteristic resistance

base material	Later Cornice Ø8	Later Cornice Ø10	Later Cornice Ø12	Later Cornice Ø16
hollow and perforated masonry	240	260	360	480

An appropriate safety factor (4 ÷ 5) is recommended.



G&B Fissaggi S.r.l. Italia

C.so Savona 22,1029 Villastellone (TO), Italia
tel. +39 011 9619433 - fax +39 011 9619382
www.gebfissaggi.com - info@gebfissaggi.com

G&B Fissaggi UK

G&B Fissaggi Vertretung Deutschland

G&B Fissaggi Ibérica

G&B Fissaggi Benelux

G&B Fissaggi France

TECHNICAL DATASHEET

LATER CORNICE NYLON all-purpose plug

EN
rev. 12/2016
p. 4/4

Characteristic resistances derive from tests conducted in G&B Fissaggi's laboratories according to international guidelines. Load values are valid only if installation is performed accurately. Designer is responsible for the choice of size and number of anchors.

Recommended load

base material	Later Cornice Ø8	Later Cornice Ø10	Later Cornice Ø12	Later Cornice Ø16
hollow and perforated masonry	43	46	64	86

Recommended values include safety factor 4, cited above, and the further 1.4 safety factor.