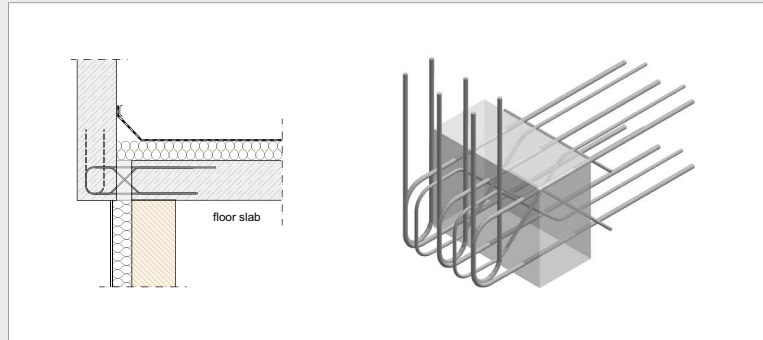


Egcoibox® FS / FM / FXL

Specifications

- Connection height: $h = 160 - 250$ mm
- Parapet wall width: ≥ 150 mm
- Joint width: FS = 60 mm
- Joint width: FM = 80mm
- Joint width: FXL = 120 mm
- (other dimensions on request)
- Concrete strength: C20/25 or C25/30



Design table Egcoibox® FS / FM / FXL – C20/25; C25/30

for parapet walls
Insulation made of 60 / 80 / 120 mm polystyrene, rock wool or foam glass, other dimensions on request.

Concrete strength	FS10-160 FM10-160 FXL10-160		FS10-200 FM10-200 FXL10-200		FS20-160 FM20-160 FXL20-160		FS20-200 FM20-200 FXL20-200		FS30-160 FM30-160 FXL30-160		FS30-200 FM30-200 FXL30-200					
	Height of connection [mm]															
	160 - 190		200 - 250		160 - 190		200 - 250		160 - 190		200 - 250					
N _{R,d} [kN/element] / M _{R,d} [kNm/element]																
N _{R,d}		M _{R,d}		N _{R,d}		M _{R,d}		N _{R,d}		M _{R,d}		N _{R,d}		M _{R,d}		
C20/25 Parapet wall C20/25 Floor slab C20/25	- 28.0	± 0.00	- 28.0	± 0.00	- 42.0	± 0.00	- 42.0	± 0.00	- 56.0	± 0.00	- 56.0	± 0.00	- 56.0	± 0.00	- 56.0	± 0.00
	- 16.7	± 0.52	- 16.7	± 0.74	- 25.1	± 0.78	- 25.1	± 1.11	- 33.5	± 1.04	- 33.5	± 1.49	- 33.5	± 1.49	- 33.5	± 1.49
	- 9.2	± 0.86	- 9.2	± 1.24	- 13.9	± 1.29	- 13.9	± 1.86	- 18.5	± 1.73	- 18.5	± 2.48	- 18.5	± 2.48	- 18.5	± 2.48
	- 0.0	± 1.29	- 0.0	± 1.85	- 0.0	± 1.93	- 0.0	± 2.77	- 0.0	± 2.58	- 0.0	± 3.67	- 0.3	± 3.67	- 0.3	± 3.67
	0.0	± 1.73	0.0	± 2.48	0.0	± 2.59	0.0	± 3.67	0.0	± 3.34	0.0	± 4.26	0.0	± 4.26	0.0	± 4.26
	2.5	± 1.73	2.5	± 2.48	3.7	± 2.59	4.3	± 3.67	7.4	± 3.34	24.3	± 3.67	24.3	± 3.67	24.3	± 3.67
	17.5	± 1.04	17.5	± 1.49	26.2	± 1.55	26.2	± 2.23	35.0	± 2.07	35.0	± 2.97	35.0	± 2.97	35.0	± 2.97
	25.0	± 0.69	25.0	± 0.99	37.5	± 1.04	37.5	± 1.49	50.0	± 1.38	50.0	± 1.98	50.0	± 1.98	50.0	± 1.98
	32.5	± 0.35	32.5	± 0.50	48.7	± 0.52	48.7	± 0.74	65.0	± 0.69	65.0	± 0.99	65.0	± 0.99	65.0	± 0.99
	40.0	± 0.00	40.0	± 0.00	60.0	± 0.00	60.0	± 0.00	80.0	± 0.00	80.0	± 0.00	80.0	± 0.00	80.0	± 0.00
C25/30 Parapet wall C25/30 Floor slab ≥C20/25	- 32.5	± 0.00	- 32.5	± 0.00	- 48.7	± 0.00	- 48.7	± 0.00	- 65.0	± 0.00	- 65.0	± 0.00	- 65.0	± 0.00	- 65.0	± 0.00
	- 21.2	± 0.52	- 21.2	± 0.74	- 31.8	± 0.78	- 31.8	± 1.11	- 42.5	± 1.04	- 42.5	± 1.49	- 42.5	± 1.49	- 42.5	± 1.49
	- 13.7	± 0.86	- 13.7	± 1.24	- 20.6	± 1.29	- 20.6	± 1.86	- 27.5	± 1.73	- 27.5	± 2.48	- 27.5	± 2.48	- 27.5	± 2.48
	- 4.5	± 1.29	- 4.5	± 1.85	- 6.7	± 1.93	- 6.7	± 2.77	- 9.0	± 2.58	- 9.0	± 3.67	- 9.0	± 3.67	- 9.0	± 3.67
	0.0	± 1.73	0.0	± 2.48	0.0	± 2.59	0.0	± 3.71	0.0	± 3.45	0.0	± 4.26	0.0	± 4.26	0.0	± 4.26
	8.9	± 1.73	8.9	± 2.48	13.3	± 2.59	13.3	± 3.71	17.8	± 3.45	28.3	± 3.67	28.3	± 3.67	28.3	± 3.67
	23.9	± 1.04	23.9	± 1.49	35.9	± 1.55	35.9	± 2.23	47.8	± 2.07	47.8	± 2.97	47.8	± 2.97	47.8	± 2.97
	31.4	± 0.69	31.4	± 0.99	47.1	± 1.04	47.1	± 1.49	62.8	± 1.38	62.8	± 1.98	62.8	± 1.98	62.8	± 1.98
	38.9	± 0.35	38.9	± 0.50	58.4	± 0.52	58.4	± 0.74	77.8	± 0.69	77.8	± 0.99	77.8	± 0.99	77.8	± 0.99
	46.4	± 0.00	46.4	± 0.00	69.6	± 0.00	69.6	± 0.00	92.8	± 0.00	92.8	± 0.00	92.8	± 0.00	92.8	± 0.00
V _{R,d} [kN/element]																
± 13.8		± 17.6		± 13.8		± 17.6		± 13.8		± 17.6		± 13.8		± 17.6		

Reinforcement

	250	250	250
Length of element [mm]	250	250	250
Parapet wall width [mm]	≥150	≥150	≥150
Height of connection [mm]	160 - 250	160 - 250	160 - 250
Tensile/pressure bars	2 Ø 8	3 Ø 8	4 Ø 8
Shear force bars	2 x 2 Ø 6	2 x 2 Ø 6	2 x 2 Ø 6
Add. stirrups in parapet walls	3 Ø 8	3 Ø 8	3 Ø 8
Applicable expansion joint distances FS [m]	8.1		
Applicable expansion joint distances FM [m]	13.5		
Applicable expansion joint distances FXL [m]	23.0		

Concrete cover console $c_a \geq 40$ mm; concrete cover floor $c_{v0} = 35$ mm shear force bars

