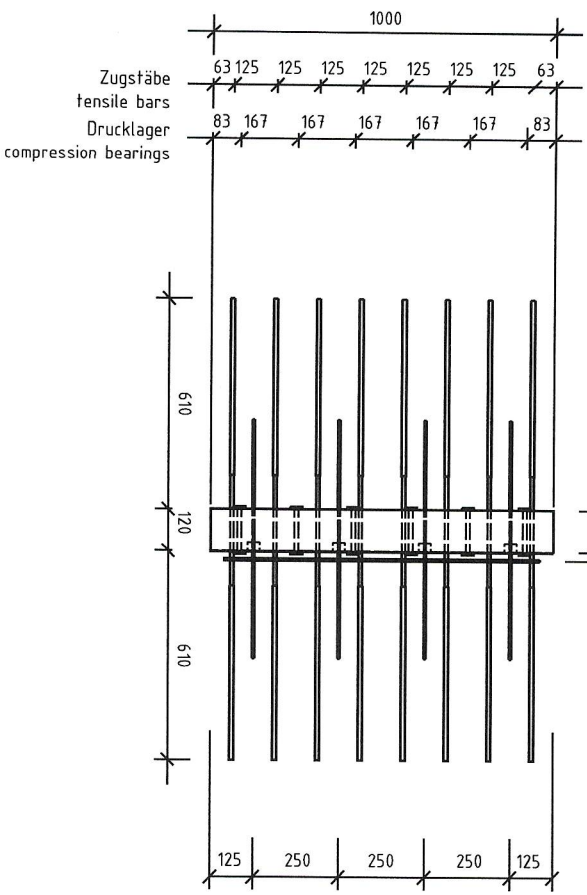
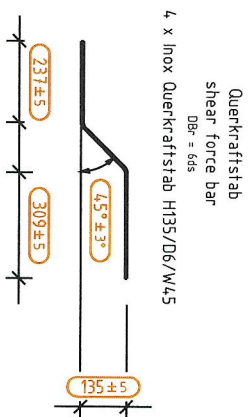
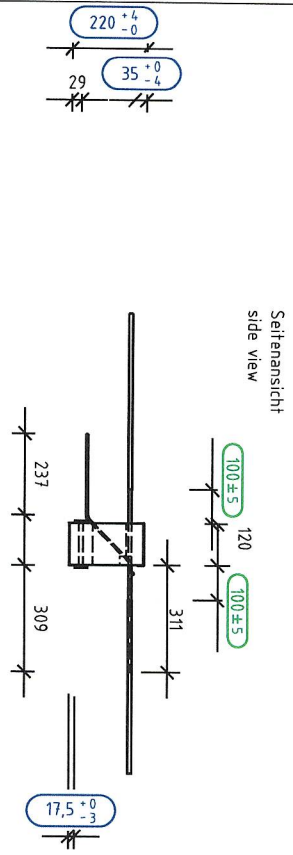


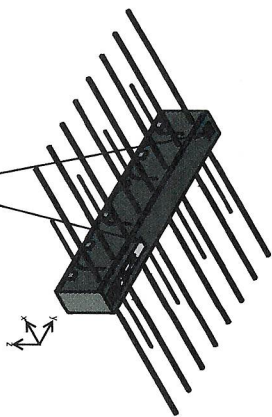
Außen
outside



Innen
inside



Querkraftstäbe
shear force bars



- PRÜFMASSE
- MEP (orange)
 - Vorkonfektionierung (blau)
 - Endfertigung (grün)

Lage der Aufkleber

Notes:



Egocobox type DE

MXL50-VS-C35-h220-PS

Element height:	h = 220 mm	Zugstäbe:	tensile bars:	8Ø12
Element length:	l = 1000 mm	Drucklager:	compression bearings:	6Ø12
Fugebreite:	f = 120mm	Druckstäbe:	compression bars:	
Insulation width:	Co = 35 mm	Querkraftstäbe:	shear force bars:	4Ø6
Deckung:	Cu = 29 mm	Querkraftstäbe abgehend:	shear force bars, litig.	
Deckung:	Cd = 29 mm	Querkraftstäbe horizontal:	shear force bars, horizontal.	
Dämmstoff:	Polystyrol	Feuerwiderstandsklasse:	fire-resistance:	
Isolationsmaterial:				

Gewicht je Element: (abheben) Weight per element: (lifting)	12,4 kg		horizontal horizontal	N _{Rdx}	
	M _{Rdy}	V _{Rdz}			V _{Rdz}
betonige concrete	C20/25	kN	kN	kN	kN
	C25/30	-54,2	48,7		

Rev	Date	Dm.	Details/Comments
-----	------	-----	------------------



Reference

Project:	Title: M50_VS / -PV820XL05050-
Date: 28.04.2020	Drawn: MS
	Checked:

Scale: 1 : 15 Page: A3

Copyright by MAX FRANK. All rights reserved

www.maxfrank.com