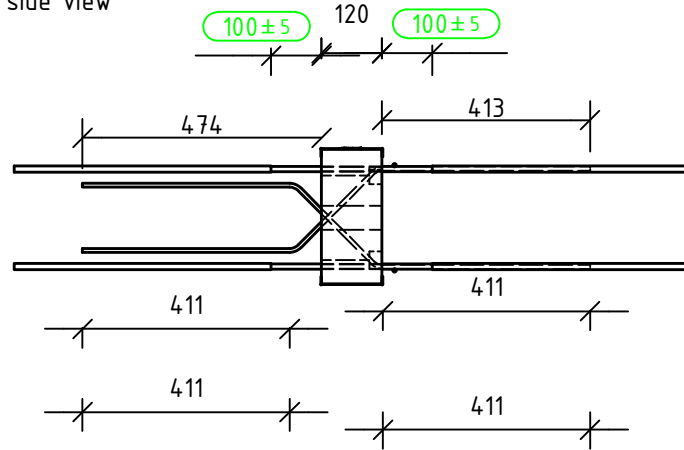
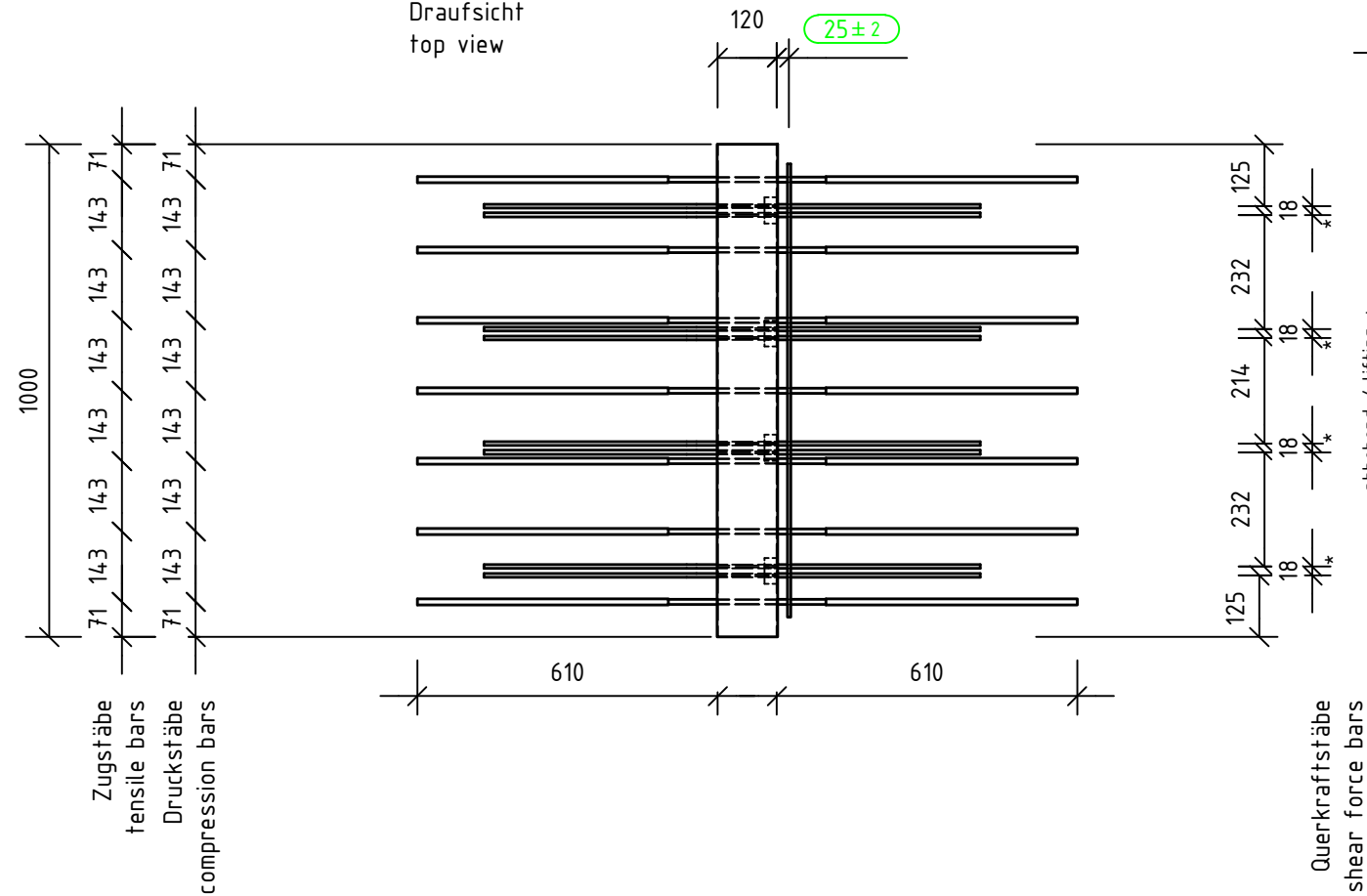


Außen
outside Innen
inside

Seitenansicht
side view



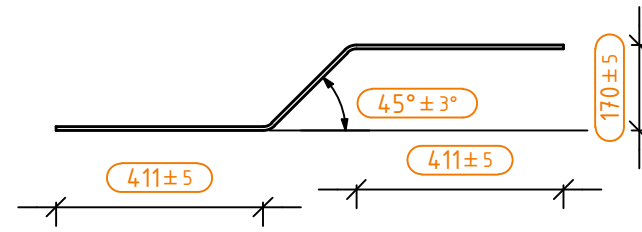
Draufsicht
top view



Querkraftstäbe
shear force bars

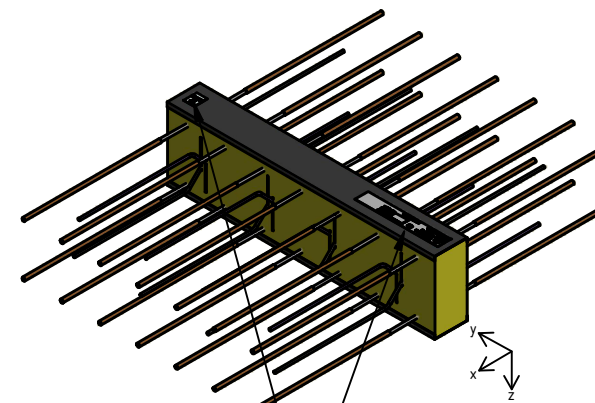
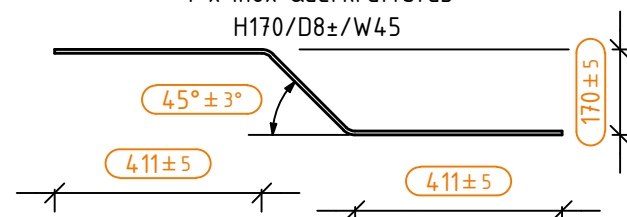
Querkraftstab
shear force bar
DBr = 6ds

4 x Inox Querkraftstab
H170/D8±/W45



Querkraftstab
shear force bar, lifting
DBr = 6ds

4 x Inox Querkraftstab
H170/D8±/W45

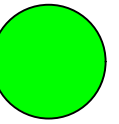


Lage der Aufkleber

PRÜFMABE

- MEP (orange)
- Vorkonfektionierung (blau)
- Endfertigung (grün)

Notes:



Egcoibox type		EU
MXL45±-V1-C35-h270-REI120-SW		
Elementhöhe: element height:	h = 270 mm	Zugstäbe: tensile bars:
Elementlänge: element length:	l = 1000 mm	Drucklager: compression bearings:
Fugenbreite: insulation width:	f = 120 mm	Druckstäbe: compression bars:
	C ₀ = 35 mm	Querkraftstäbe: shear force bars:
Betondeckung: concrete cover:	C _u = 30 mm	Querkraftstäbe abhebend: shear force bars, lifting:
	C _{u2} = mm	Querkraftstäbe horizontal: shear force bars, horizontal:
Dämmstoff: insulation material:	Steinwolle	Feuerwiderstandsklasse: fire-resistance:
		REI120
Gewicht je Element: weight per element:	19,9 kg	(abhebend) horizontal
pro Element: per element:	M _{Rdy}	V _{Rdz}
Betongüte: concrete:	kNm	kN
C20/25		
C25/30	±56,5	86,5

Rev.	Date	Drn.	Details/Comments
------	------	------	------------------



Reference:		
Project:		
Title: M45±_V1/ -PV820M05110-		
Date: 09.04.2021	Drawn: FB	Checked:
Scale: 1 : 15	Dimension:	Page: A3
Copyright by MAX FRANK. All rights reserved		
www.maxfrank.com		