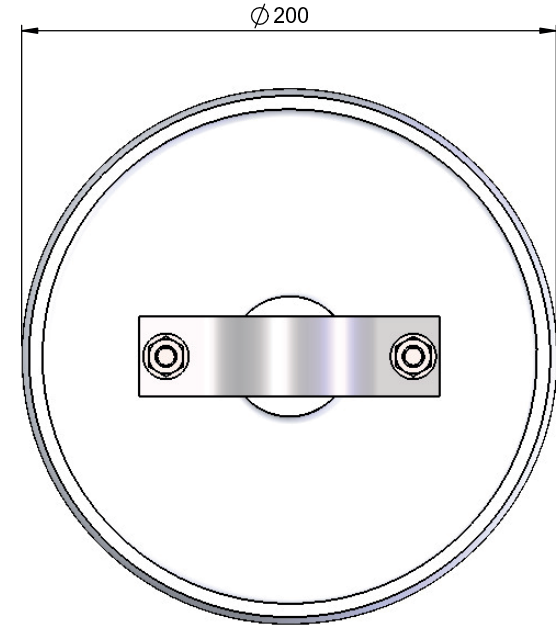
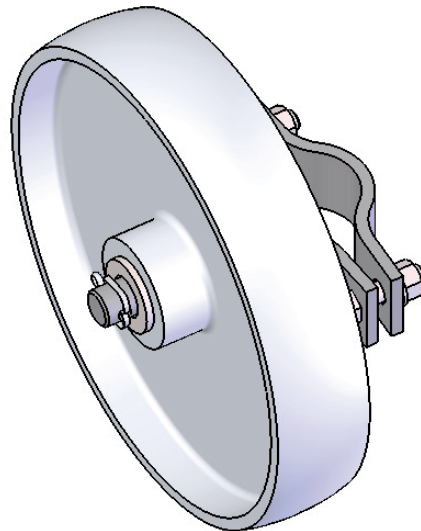
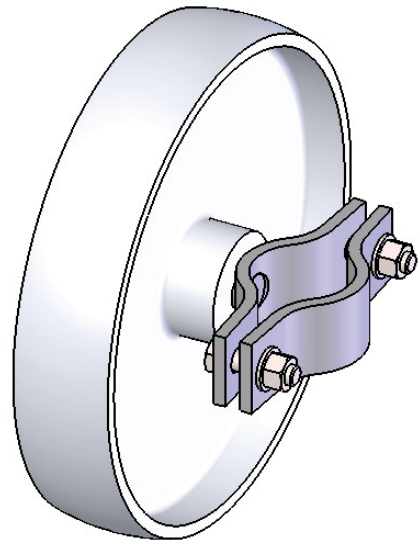


ALL DIMENSIONS IN MILLIMETRES
REMOVE ALL SHARP EDGES

1046 8
THIRD ANGLE PROJECTION
DO NOT SCALE DRAWING



4	18/3/16	ISSUED FOR MANUFACTURE	GC	.	.
3	25/5/15	ISSUED FOR MANUFACTURE	GC	.	.
REV	DATE	DESCRIPTION	DRN	CHKD	APPR

TOLERANCES - UNLESS STATED OTHERWISE	
UNTOLERANCED DIMENSIONS	+/- 2mm
CUTTING LENGTHS	+/- 2mm
FABRICATION	
UP TO 300mm	+/- 1mm
UP TO 1000mm	+/- 2mm
1001mm & ABOVE	+/- 3mm
ANGULAR	+/- 1°
MACHINING	+/- 0.2mm
GAUGE	+/- 10%
WEIGHT	+/- 10% (DUE TO MATERIAL PROPERTIES & TOLERANCES)

TITLE: CASTOR ASSEMBLY LARGE EURO			
NAME	SIGNATURE	DATE	MATERIAL:
G. CRICK		19/12/11	SEE DETAIL SHEETS
CHK'D			
FINISH: SEE DETAIL SHEETS			

QUBE®

Drw / Stockcode No.	Revision
09053025	4

WAS ZND518 & ZNDDE0080
THE COMPANY RETAIN THE RIGHT TO PERIODICALLY ALTER INFORMATION WITHIN THIS DRAWING SHEET AND WILL ATTEMPT TO NOTIFY ALL PARTIES CONCERNED OF ANY CHANGES AND THE INFORMATION ON THIS SHEET SHOULD NOT BE REPRODUCED WITHOUT THEIR WRITTEN CONSENT.