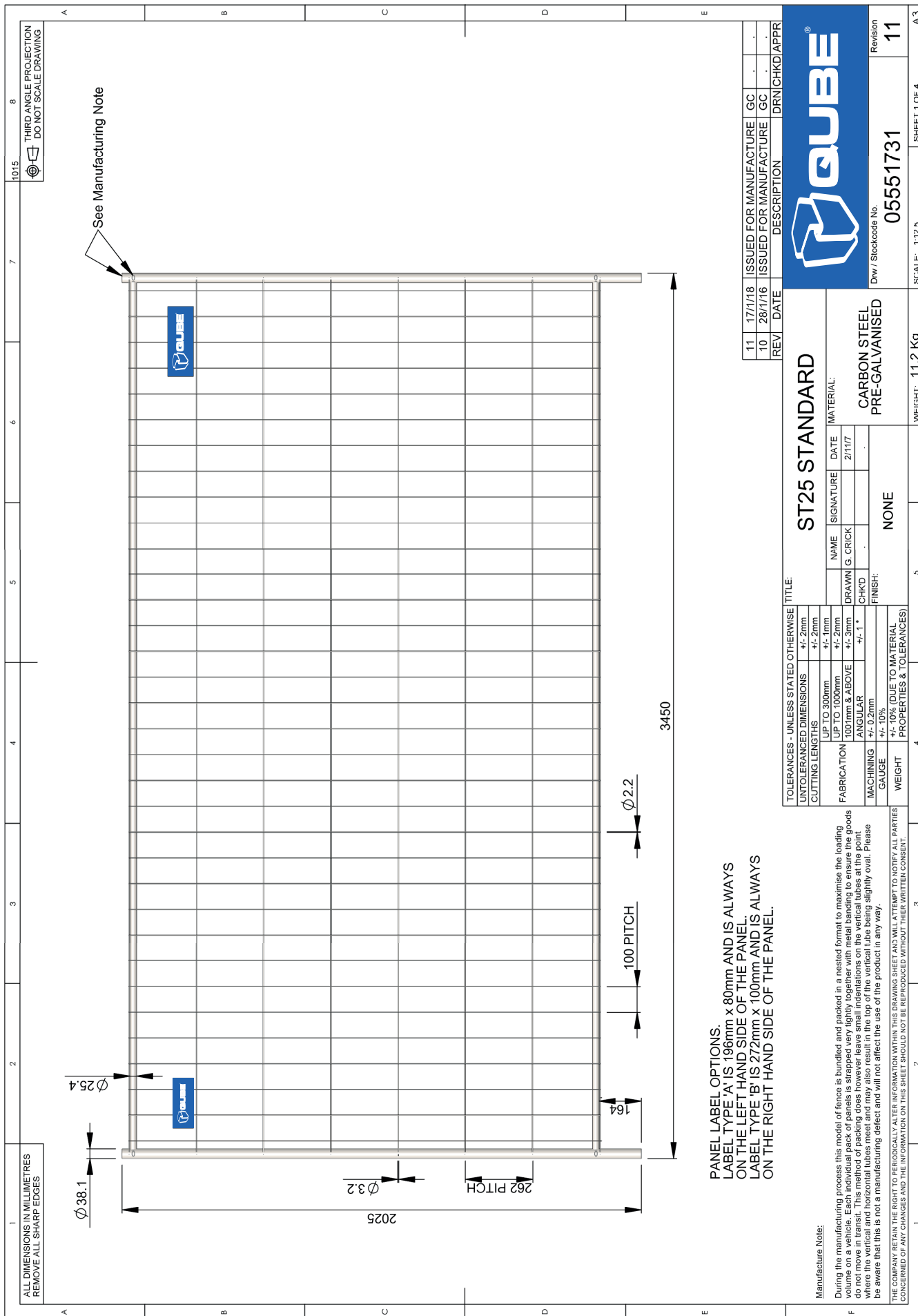




# QUBECLOTURES

Type: ST25 Standard



1015  
THIRD ANGLE PROJECTION  
DO NOT SCALE DRAWING

See Manufacturing Note

PANEL LABEL OPTIONS.  
LABEL TYPE 'A' IS 196mm x 80mm AND IS ALWAYS ON THE LEFT HAND SIDE OF THE PANEL.  
LABEL TYPE 'B' IS 272mm x 100mm AND IS ALWAYS ON THE RIGHT HAND SIDE OF THE PANEL.

Manufacture Note:

During the manufacturing process this model of fence is bundled and packed in a nested format to maximise the loading volume of a vehicle. Each bundle of panels is secured with tightly coiled straps which are placed on the top of the goods do not move in transit. This method of packing does however leave small indentations on the vertical tubes at the point where the vertical and horizontal tubes meet and may also result in the top of the vertical tube being slightly oval. Please be aware that this is not a manufacturing defect and will not affect the use of the product in any way.

THE COMPANY RETAINS THE RIGHT TO PERIODICALLY ALTER INFORMATION WITHIN THIS DRAWING SHEET AND WILL ATTEMPT TO NOTIFY ALL PARTIES CONCERNED OF ANY CHANGES AND THE INFORMATION ON THIS SHEET SHOULD NOT BE REPRODUCED WITHOUT THEIR WRITTEN CONSENT.

TOLERANCES - UNLESS STATED OTHERWISE TITLE:

UNTOLERANCED DIMENSIONS	+/- 2mm
CUTTING LENGTHS	+/- 2mm
FABRICATION UP TO 3000mm	+/- 1mm
1001mm & ABOVE	+/- 2mm
ANGULAR	+/- 1°
MACHINING	+/- 0.2mm
GAUGE	+/- 0.05mm
WEIGHT	+/- 10% (DUE TO MATERIAL PROPERTIES & TOLERANCES)

## ST25 STANDARD

MATERIAL: CARBON STEEL PRE-GALVANISED

DATE: 2/11/17

NAME: G. CRICK

SIGNATURE: [Signature]

NONE

FINISH: CHKD

WEIGHT: 11.2 Kg

REV	DATE	DESCRIPTION
11	17/11/18	ISSUED FOR MANUFACTURE
10	28/7/16	ISSUED FOR MANUFACTURE
		DRN1CHKDIAPPR



Draw / Stockcode No. **05551731**  
Revision **11**

SCALE: 1:12.5 SHEET 1 OF 4 A3

